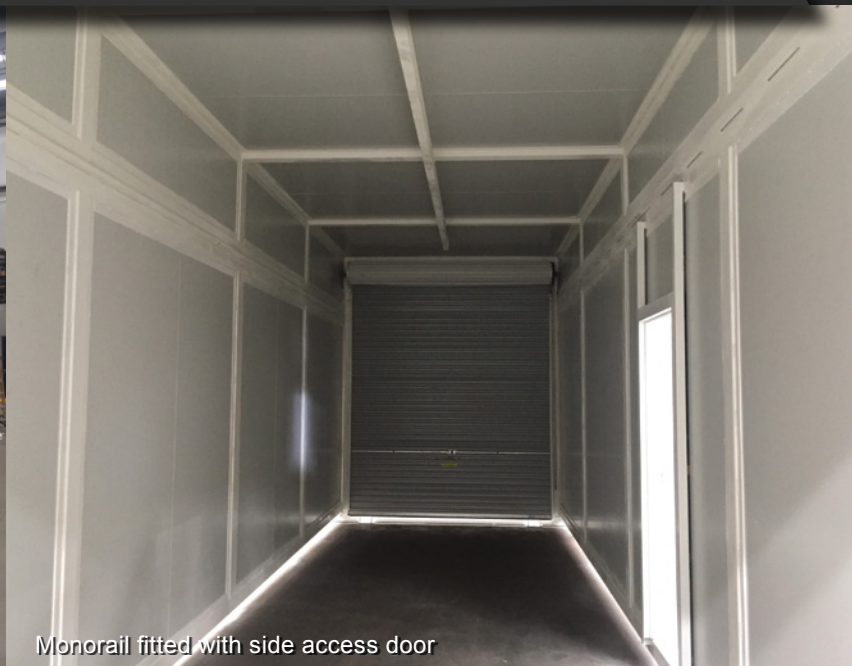




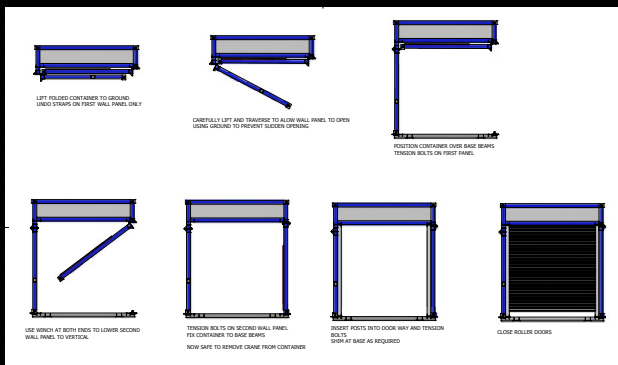
Floorless container module



Monorail fitted with side access door

MODULE CONTAINERS – DESIGN AND FABRICATION

- Patented Australian design
- Each module has double the volume of a standard 40" shipping container
- Overhead monorail suitable for 1000 kgs WLL
- Lights can be fitted
- Specification can be changed to suit customer requirements – height, width, monorail capacity
- Painted to your colours
- Folds down to a height of 1109 mm
- Overhead covers can be fitted between the modules
- Quick and easy to erect or lower module
- Side access doors
- Roller doors on both ends
- 3 modules can be carried on a semi-trailer giving 6 times the volume of a standard 40" container on 1 load



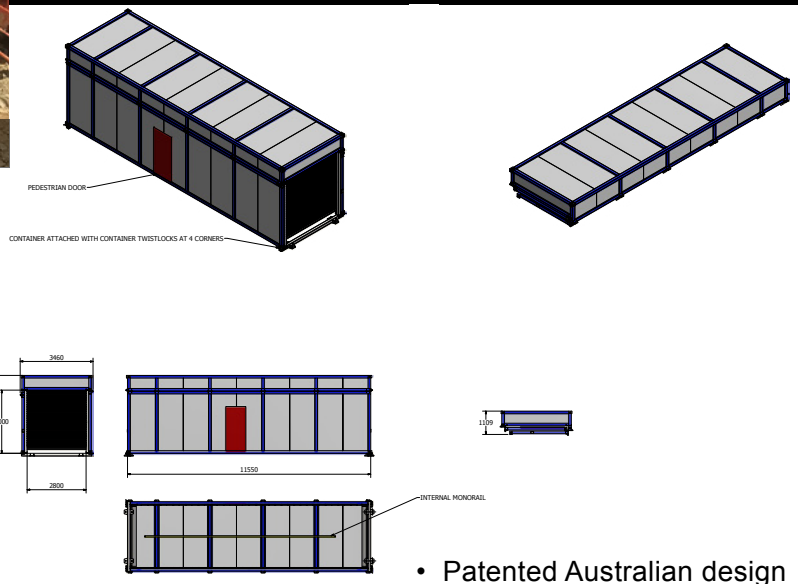
3 modules loaded on a semi-trailer

MODULE CONTAINERS – DESIGN AND FABRICATION



Module in use on a construction site

- Patented Australian design
- Constructed with insulated panels – control temperature and noise
- Wide enough to park vehicles inside and still open doors
- Floorless module can be placed on almost any surface



- Patented Australian design

