

Calbah
1300 225 224

Design
Engineering
Fabrication



DESIGN, ENGINEERING, SPECIALISED FABRICATION

NOTE: Some items are IP protected and cannot be copied

STAIRS & LADDERS

Improvise Adapt and Overcome

30 YEARS OF PREMIUM, REPUTABLE, SPECIALISED DESIGN ENGINEERING

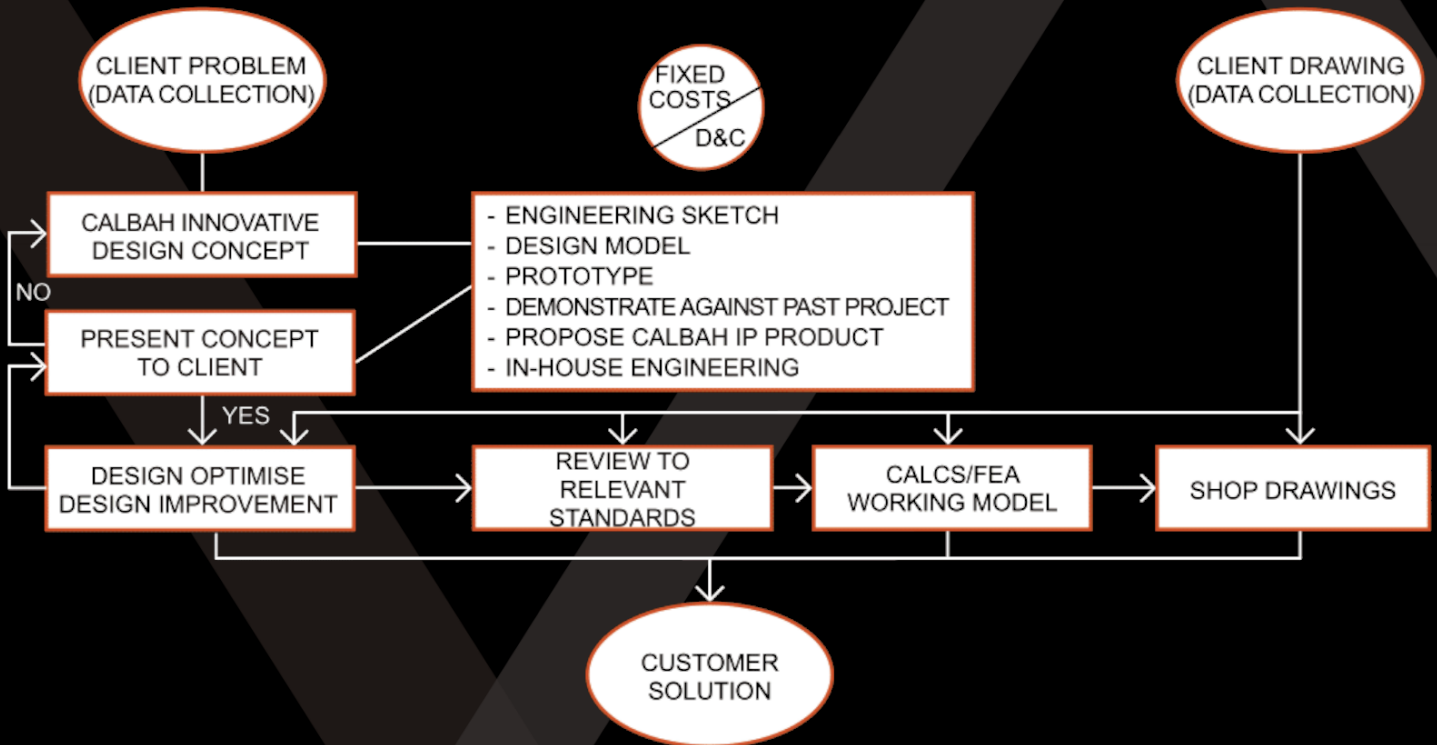
Calbah Industries Design and Drafting office has extensive experience. From concept discussions or sketches, we assist clients with the process of Industrial Design and product development through to specification for manufacture, shop drawings, production management and delivery of finished goods.

- | | |
|----------------|--|
| Design Brief | Your needs and scope are clearly understood and defined |
| Concept Design | Calbah Industries develops a solution to meet your needs and presents this solution to you for discussion and approval |
| Design | Calbah Industries develops the design to achieve maximum productivity and efficiency in operation |
| Delivery | Final design is presented
Option for full shop drawings to be completed |

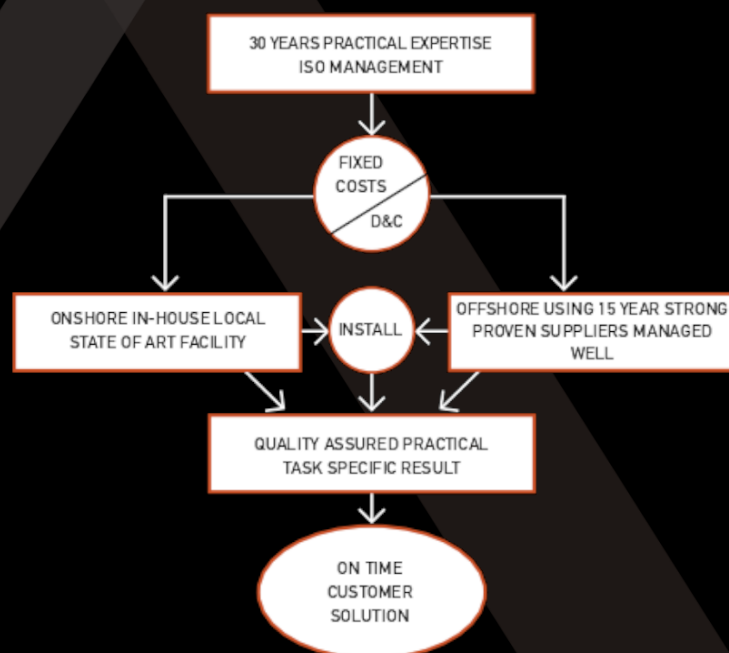


CALBAH DESIGN/FABRICATION STRUCTURE CHART

CALBAH INDUSTRIES – INDUSTRIAL DESIGN



CALBAH INDUSTRIES – FACILITATE PROJECT



ACCESS STAIRS

UNIQUE TOP-DOWN BUILD PROCESS REMOVES REQUIREMENT TO ASSEMBLE SCAFFOLD IN THE SHAFT

SIZED FOR STANDARD ACCESS OR STRETCHER EGRESS

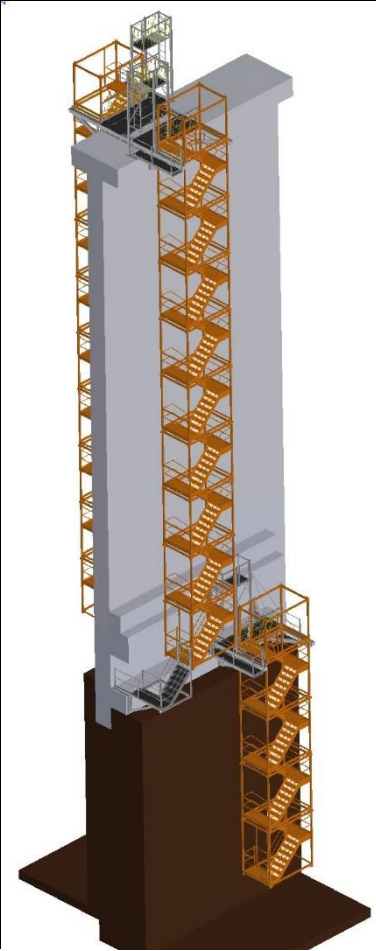
MAXIMUM SHAFT DEPTH IN SINGLE FALL 45M

CAN BE SUPPORTED ON CAPPING BEAM OR GIRDERS

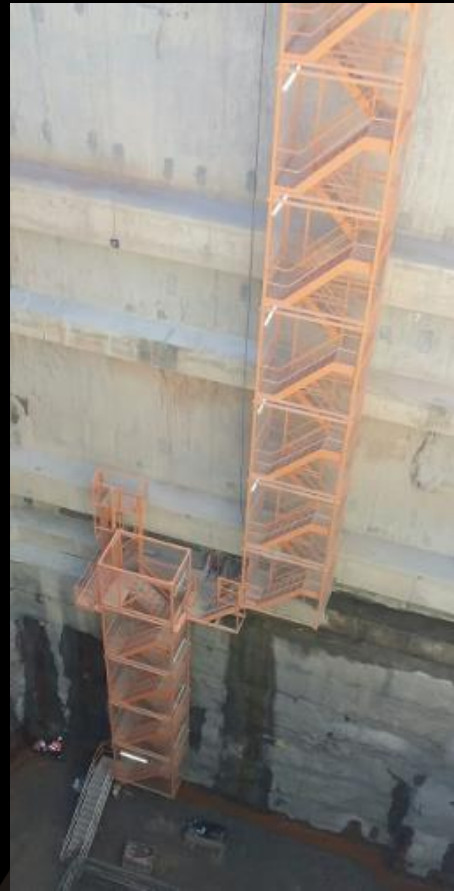
MULTIPLE ACCESSORIES AVAILABLE:

- WALL STAIRS
- SELF ADJUSTING EXIT STAIR (STRAIGHT OR 90 DEG EXIT)
- INTERMEDIATE LANDINGS FOR ADDITIONAL DEPTH
- CROSSOVER BRIDGE
- TOP DOWN OR BOTTOM UP SYSTEM

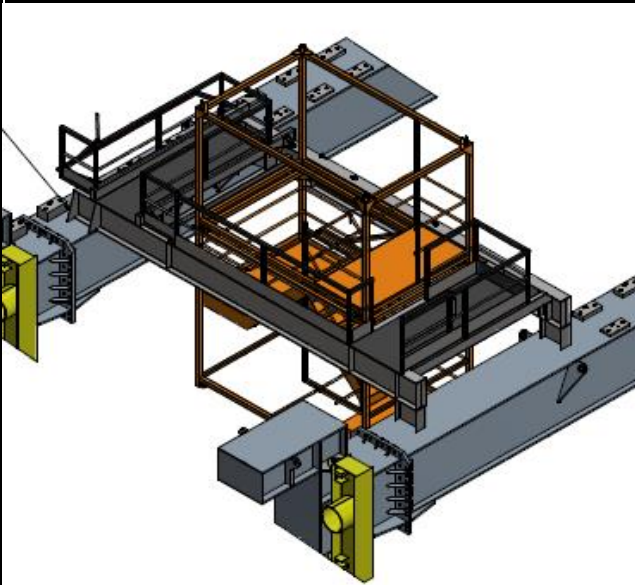
STAIR WITH DUAL FALL



STAIR WITH INTERMEDIATE LANDING



LANDING FRAME OVER GIRDER



LANDING FRAME OVER GIRDER

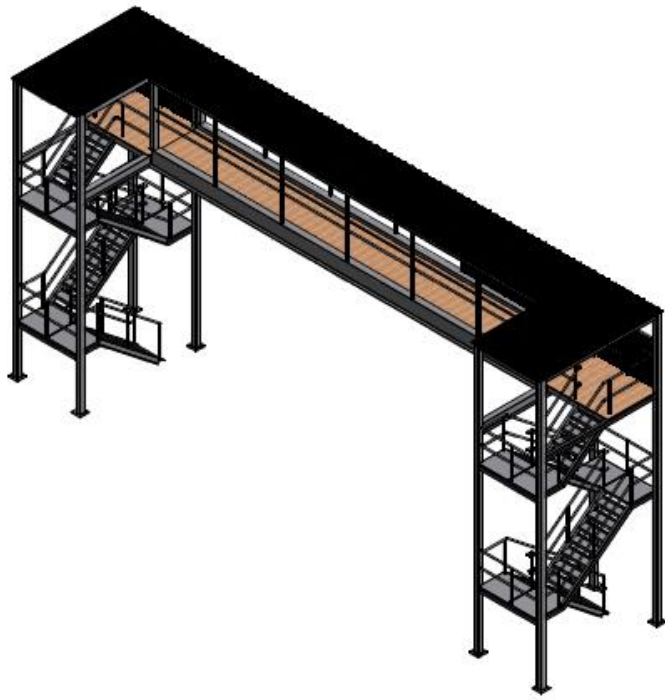


PEDESTRIAN ACCESS BRIDGE

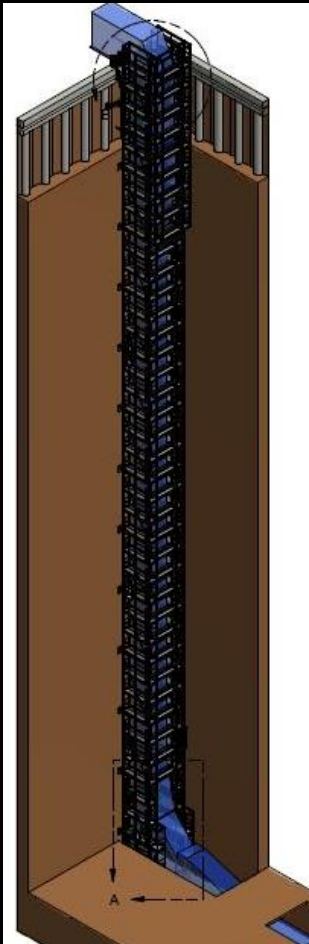
DESIGN LOAD: 4 kPa

SPAN: 13M

CLEARANCE: 6M



STAIR SYSTEM TO SUPPORT CONVEYOR MAINTANANCE



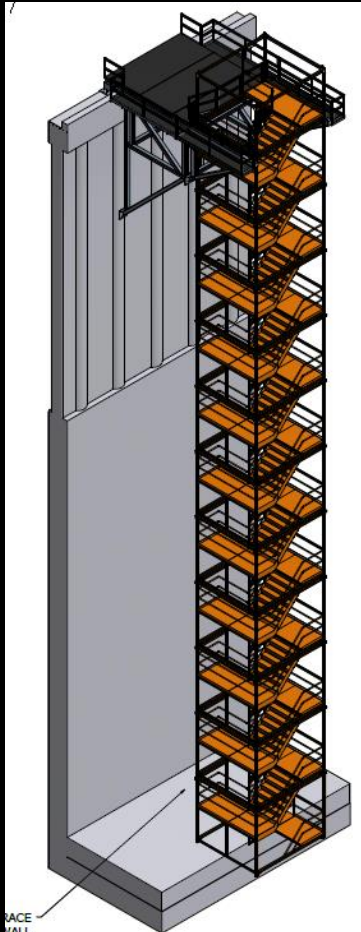
STAIR SYSTEM WITH CATWALK



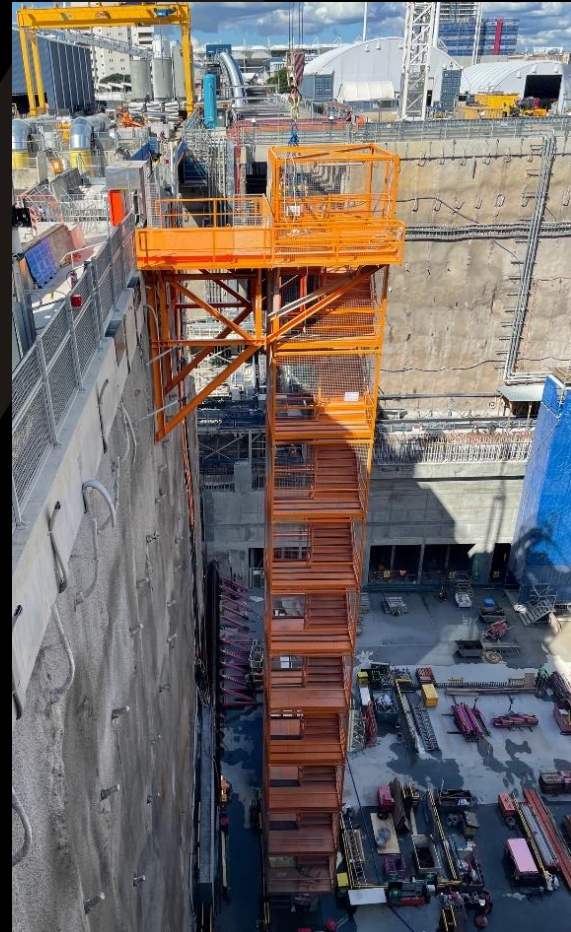
STAIR SYSTEM WITH CATWALK



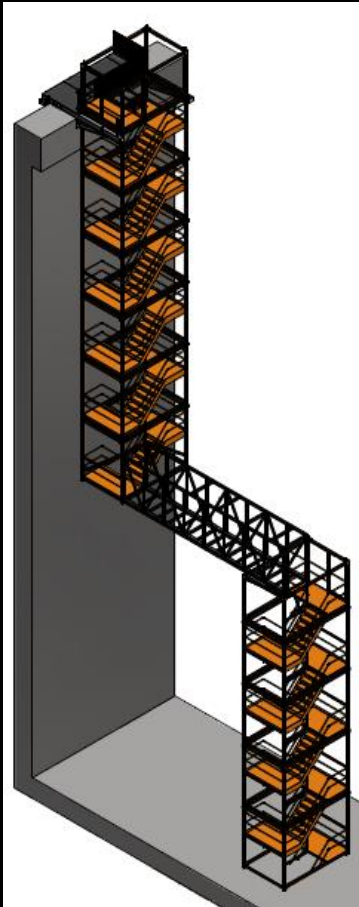
STAIR WITH LARGE OFFSET



STAIR WITH LARGE OFFSET



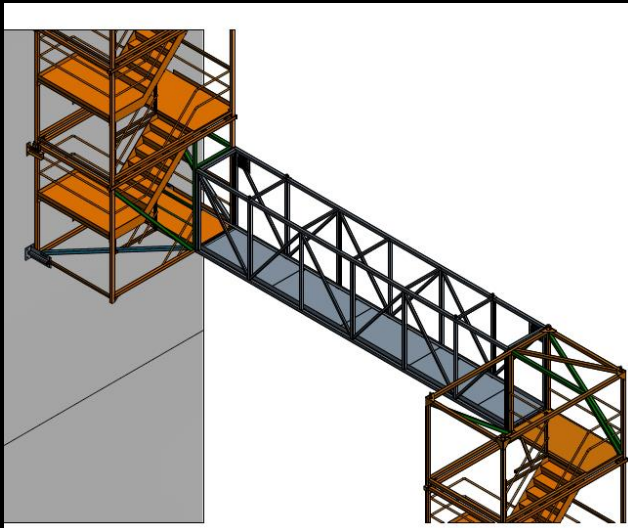
STAIR WITH CROSSOVER BRIDGE



STAIR WITH CROSSOVER BRIDGE



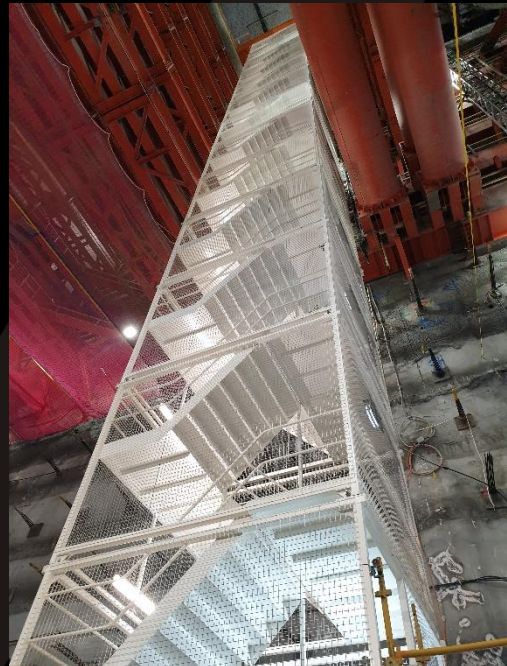
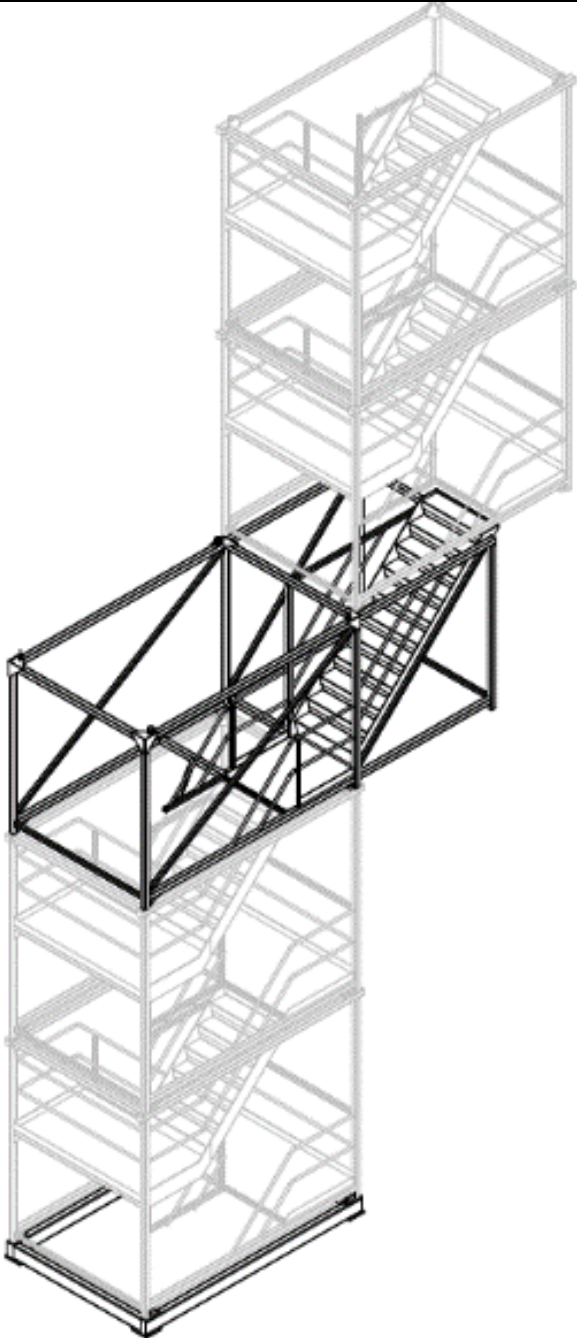
STAIR WITH CROSSOVER BRIDGE



STAIR WITH CROSSOVER BRIDGE



STAIR WITH STAGGERED OFFSET



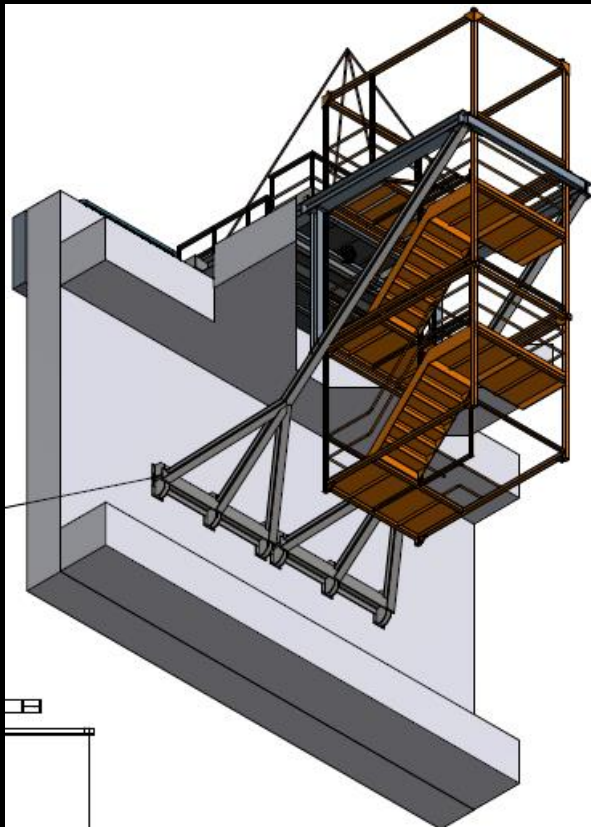
STAIR SYSTEM AGAINST WALL



STAIR SYSTEM AGAINST WALL

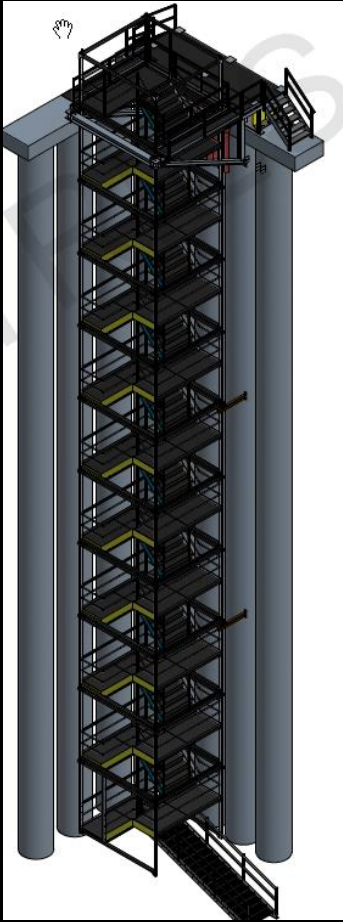


STAIR SYSTEM OFFSET FROM WALL



STAIR SYSTEM OFFSET FROM WALL

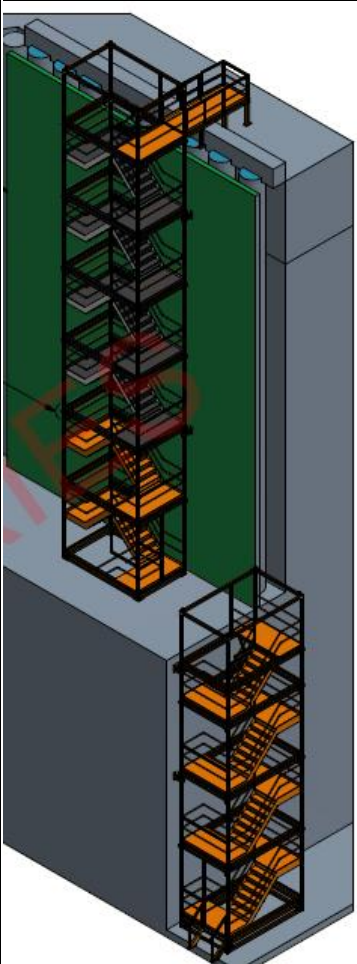




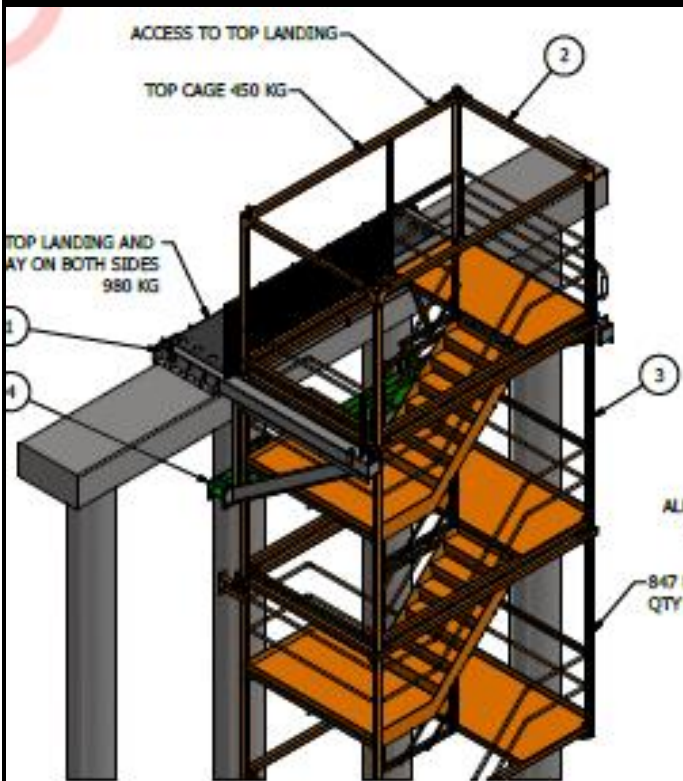
STAIR SYSTEM BOTTOM UP



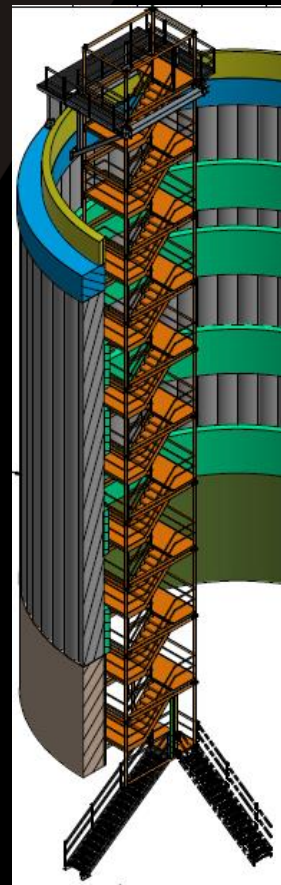
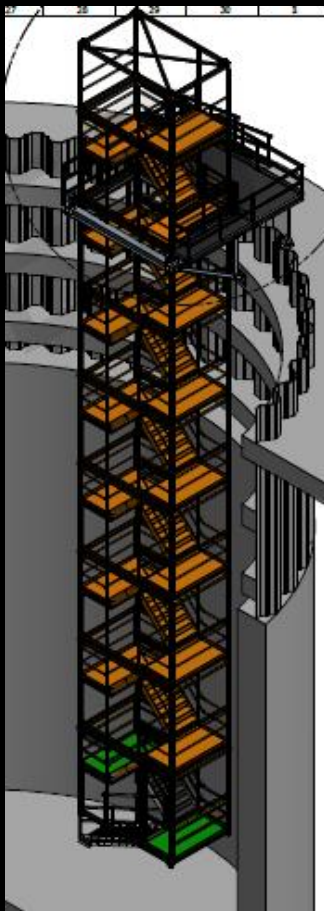
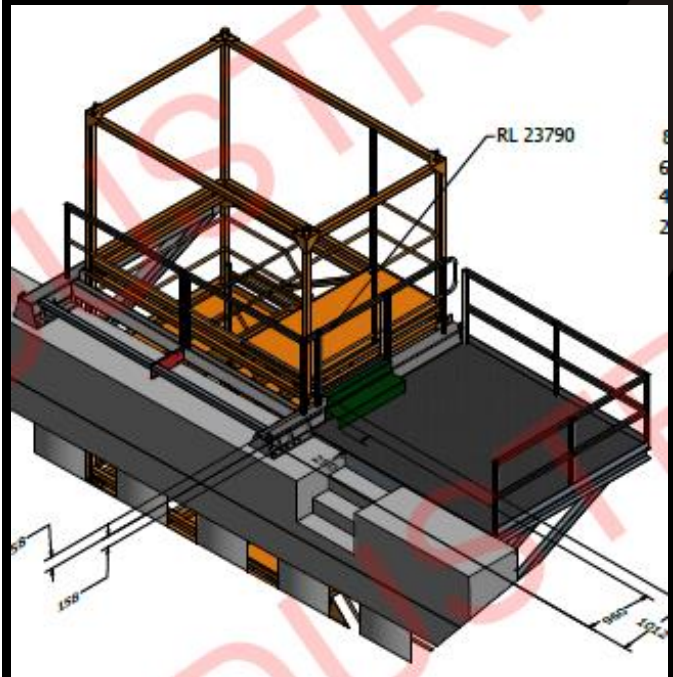
STAIR SYSTEM BOTTOM UP



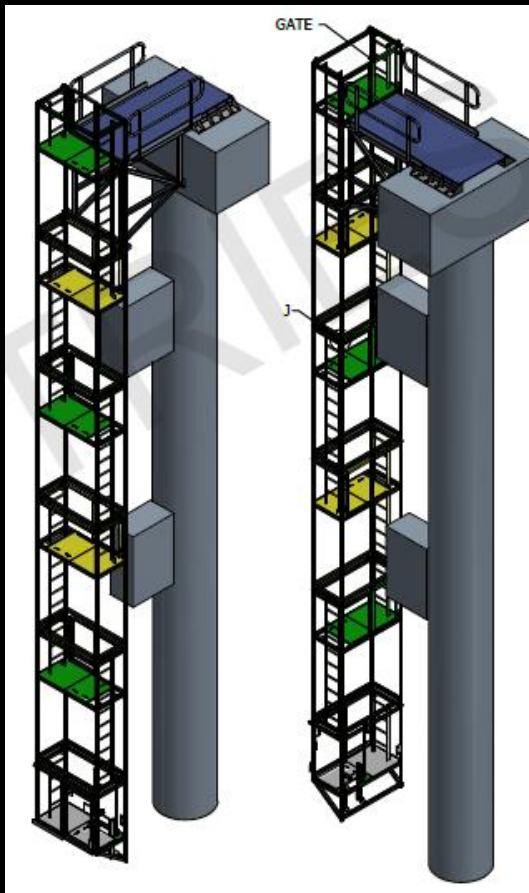
STAIR SYSTEM WITH BRACING TO PILE



STAIR SYSTEM WITH SIDE PLATFORM



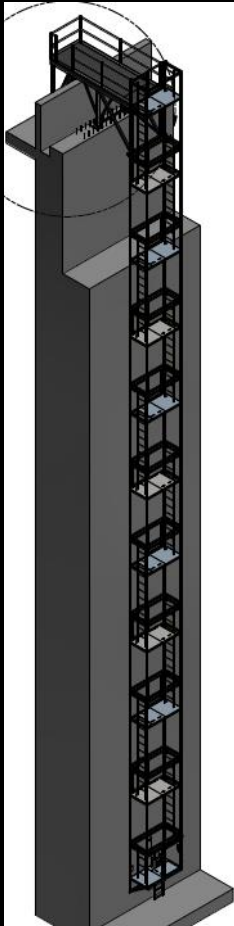
LADDER SYSTEM OFFSET FROM WALL



LADDER SYSTEM



LADDER SYSTEM OVER FLOOD WALL



LADDER SYSTEM OVER FLOOD WALL



1300 CAL BAH
225 224