

Calbah
1300 225 224

Design
Engineering
Fabrication



DESIGN, ENGINEERING, SPECIALISED FABRICATION

NOTE: Some items are IP protected and cannot be copied

PIPES AND BRACKETS

Improvise Adapt and Overcome

30 YEARS OF PREMIUM, REPUTABLE, SPECIALISED DESIGN ENGINEERING

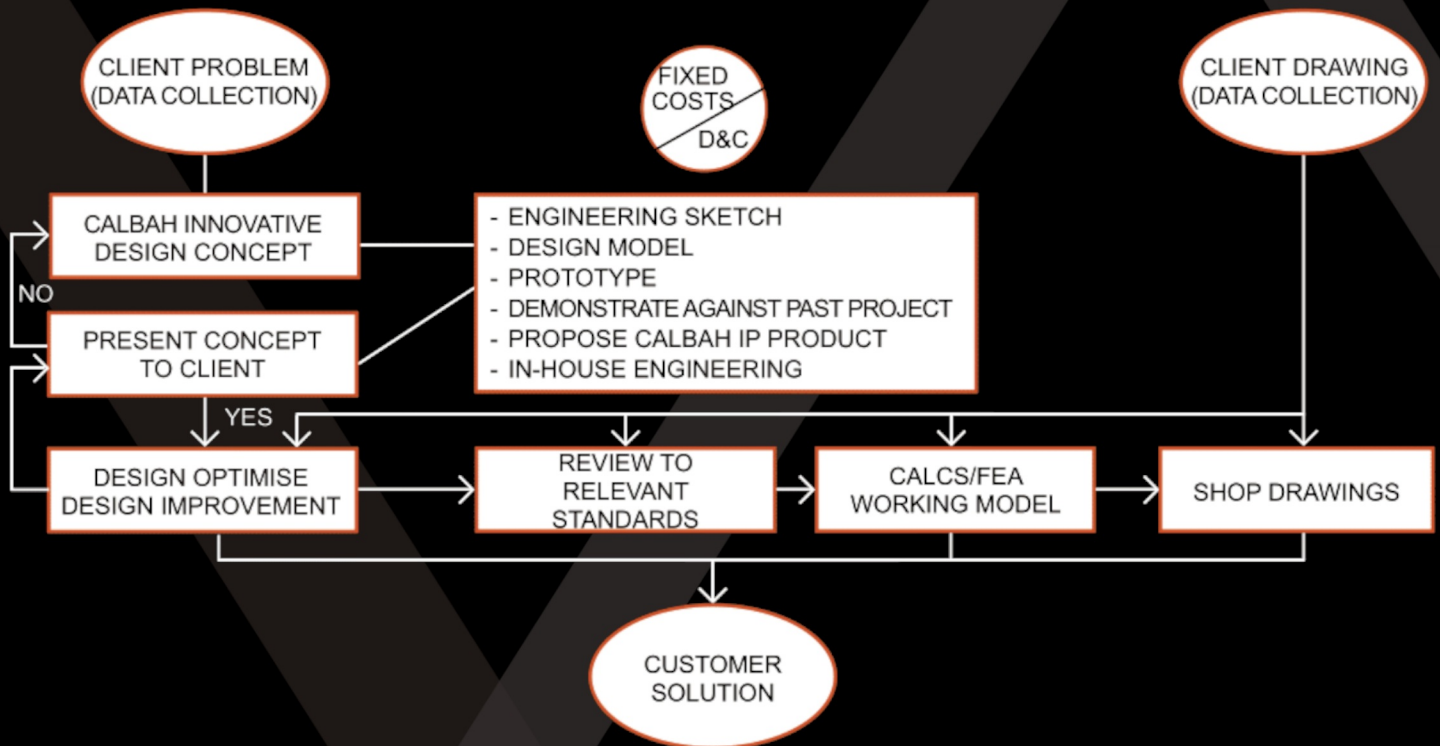
Calbah Industries Design and Drafting office has extensive experience. From concept discussions or sketches, we assist clients with the process of Industrial Design and product development through to specification for manufacture, shop drawings, production management and delivery of finished goods.

- | | |
|----------------|--|
| Design Brief | Your needs and scope are clearly understood and defined |
| Concept Design | Calbah Industries develops a solution to meet your needs and presents this solution to you for discussion and approval |
| Design | Calbah Industries develops the design to achieve maximum productivity and efficiency in operation |
| Delivery | Final design is presented
Option for full shop drawings to be completed |

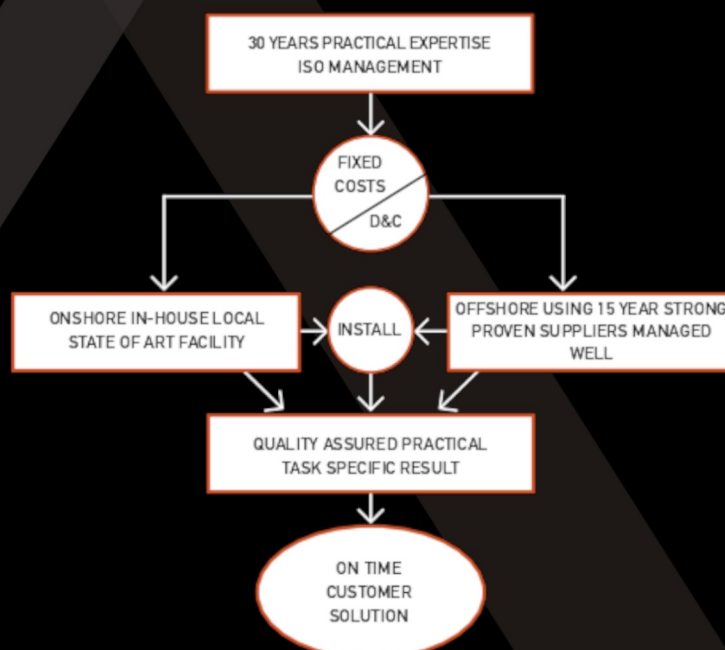


CALBAH DESIGN/FABRICATION STRUCTURE CHART

CALBAH INDUSTRIES – INDUSTRIAL DESIGN



CALBAH INDUSTRIES – FACILITATE PROJECT



CUSTOM DESIGN & ENGINEERING OFFICE

Design Engineers

Draftsmen

Design Review and enhancement/
optimisation

FEA, Design Verification by 3rd Party,
shop drawings

Hydraulic, Mechanical, Electrical,

Spooling and Heavy Fabrication.

Highly Experienced in Tunnelling,
Infrastructure, Mining, Oil & Gas, Rail
and General Engineering

Practical Design through to
Commissioning

Qualified Project Managers

INDUSTRY SECTORS

- Oil & Gas
- Tunnelling
- Rail
- Infrastructure
- Specialized Machinery
Design & Manufacture
- General Engineering
- Mining

CERTIFICATIONS

ASI Environmental Sustainability
Charter Member Platinum

Avetta Consortium Member

AS 1210, ASME, AWS D1.1

AS/NZS 1554.1, 1554.2, 1554.3,
1554.4, 1554.5, 1554.6

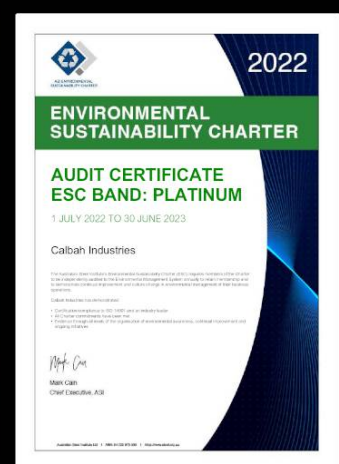
ISO 45001: 2018 Health and Safety

DNV 2.7-1, DNV 2.7-3

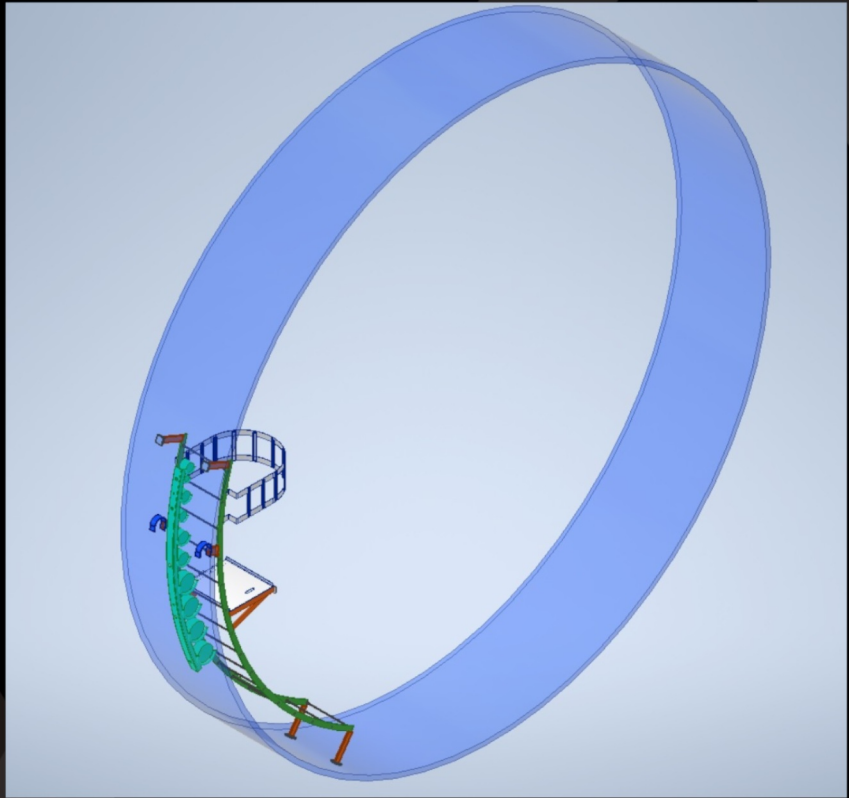
ISO 9001: 2015 Quality

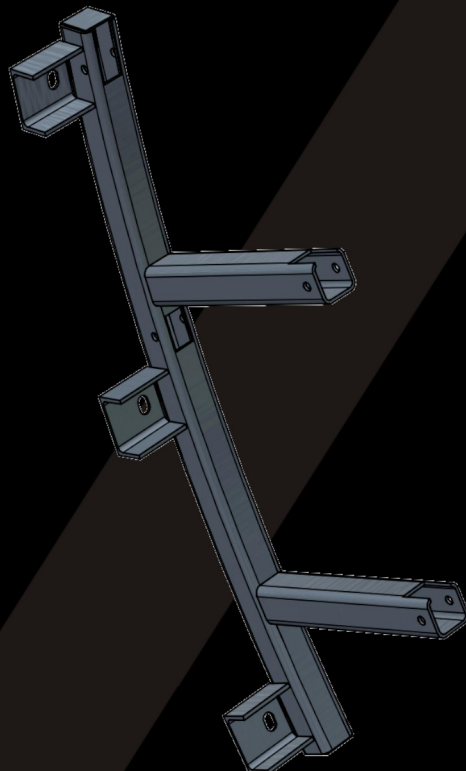
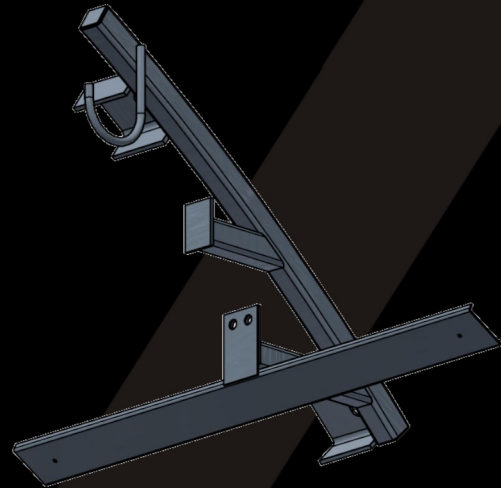
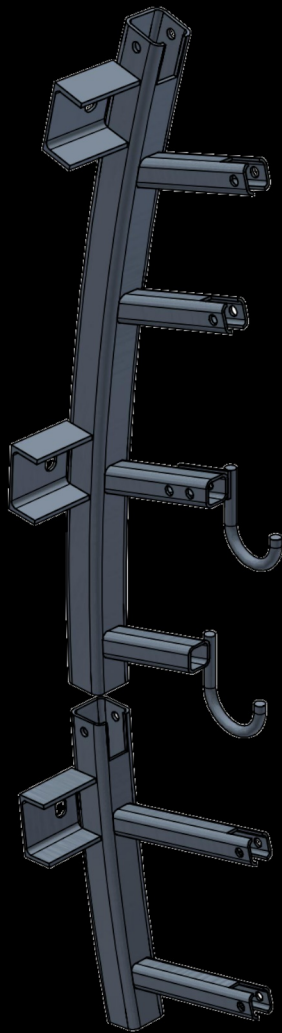
ISO 14001:2015 Environment

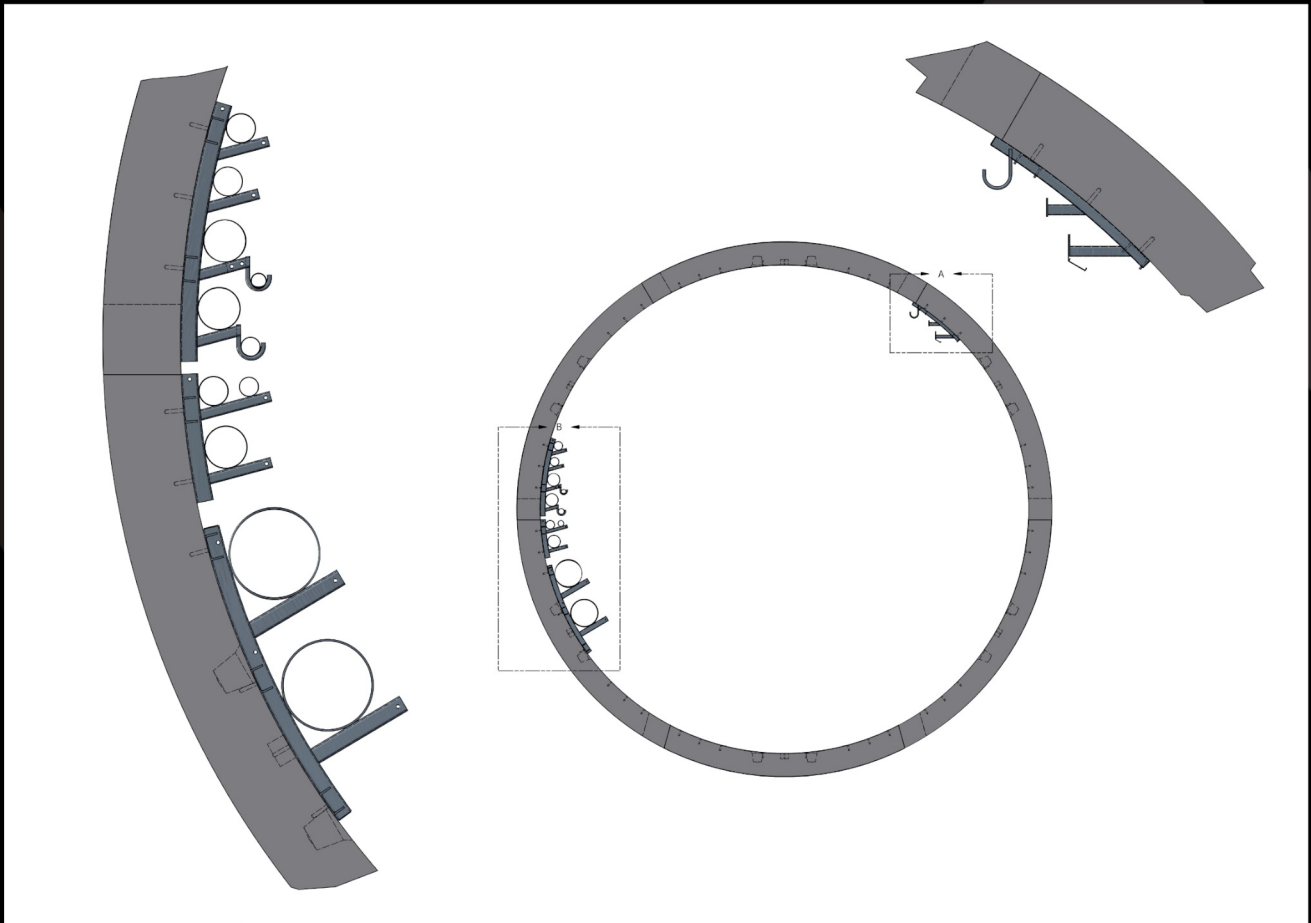
QUALIFICATIONS



PIPES AND BRACKETS







1300 CAL BAH
225 224